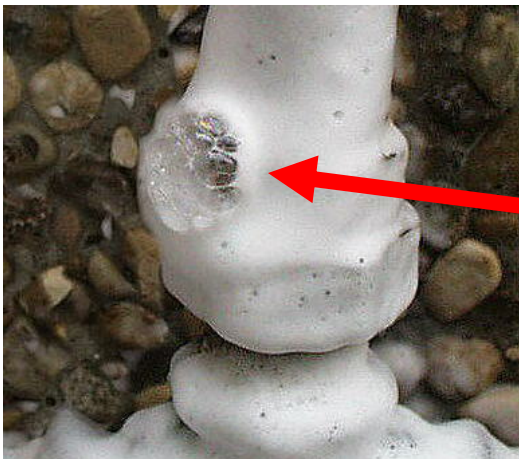
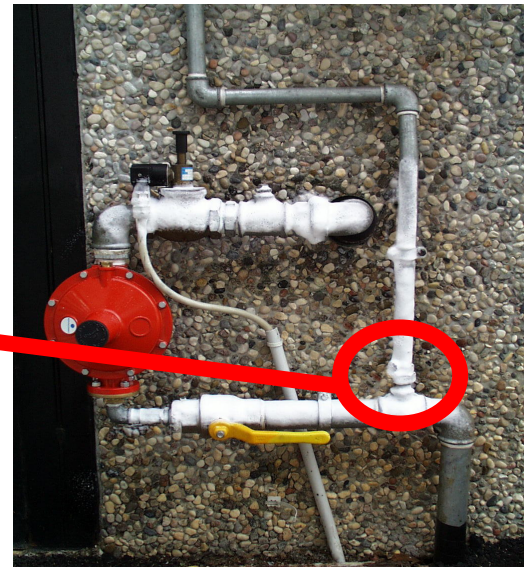


FEATURES

Chemical product packaged in a specific spray bottle for the detection of gas leaks from any system. The **DETECTOR**, absolutely not harmful for the operator, is based on synthetic soaps that physically interact with the gas leaks to form a whole series of persistent and very evident bubbles.

CHEMICAL/PHYSICAL DATA

Bottle spray of 400 ML
Propellant: PROPANE / BUTANE
Color: COLORLESS
pH: 7
Solub. in H₂O: COMPLETE
Flammability : FLAMMABLE



HOW TO USE

The surfaces on which the product should be sprayed should preferably be clean, degreased and dry. Shake the bottle vigorously before use. Spray from a distance of 20/30 cm trying to cover the entire surface with a layer of homogeneous and thin foam.

The presence of any leaks will be immediately and easily highlighted by a gurgling of bubbles.